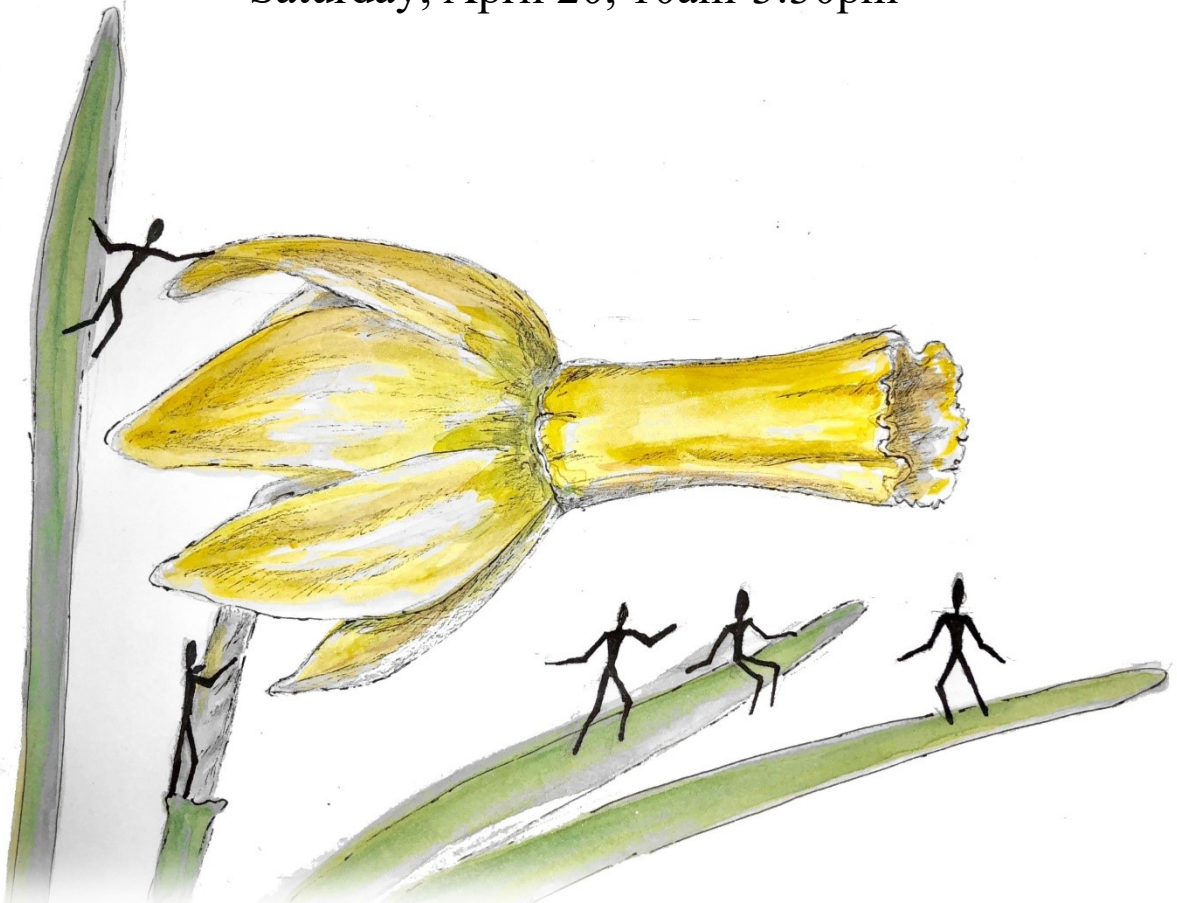


The Indiana Daffodil Society presents

"Gather in Admiration"

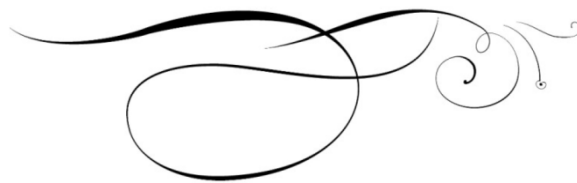
The 2019 Midwest Regional Daffodil Show

Friday, April 19, 3pm-6pm
Saturday, April 20, 10am-3:30pm



Hamilton Ice Arena

2501 Lincoln Park Dr., Columbus, IN



Approved by the American Daffodil Society
THE PUBLIC IS INVITED • ADMISSION FREE

TABLE OF CONTENTS

Show Committee.....	1
Point Scales for Judging Cut Specimens	1
General Rules.....	2
Horticultural Rules.....	2-3
Photography Rules.....	4
Single Stem and Vase of Three Exhibits, Standards and Miniatures	
Divisions 1-4.....	5
Divisions 5-13	6
Collections of Five Standard Daffodils	7
Grand Collections of Standard Daffodils.....	8
Historic Daffodils	8
Intermediate Daffodils	8
Classic Daffodils.....	9
Collections of Miniature Daffodils	9
Small Growers Section	9
Youth Section	10
Indiana Daffodil Society Classes.....	10
Invitation to Join	10
Awards	11-12



The Indiana Daffodil Society wishes to extend thanks to the following:

- All out of town judges, clerks, members, and exhibitors who have given so generously of their time to travel to Columbus, IN to help us achieve our show's goals.
- The Hamilton Ice Arena.

SHOW COMMITTEE

General Chair.....	Sue Luken
Photography Division Chair	Jeanne Lager
Awards	Dan Bellinger
Awards Table.....	Brenda Wampler
Classification & Placement.....	Ruth Pelouch, Carolyn Cutshall, Sue Luken
Clerks	Joan Workman
Hospitality.....	Ruth Pelouch
Judges	Dan Bellinger
Recorder.....	Sue Luken
Schedule.....	Jim Wilson, Suzy Wert, Brenda Wampler
Youth and New Exhibitors	Sara Kinne
Dismantling.....	All Members



ADS POINT SCALES FOR JUDGING CUT SPECIMENS:

STANDARD DAFFODILS

FORM	25
CONDITION	20
COLOR.....	15
SUBSTANCE and TEXTURE	15
POSE and STEM	15
SIZE	<u>10</u>
	100

MINIATURE DAFFODILS

FORM & GRACE	25
CONDITION.....	20
COLOR	15
SUBSTANCE and TEXTURE.....	15
POSE and STEM.....	15
SIZE	<u>10</u>
	100

SPECIES DAFFODILS

CONDITION	50
FORM	15
COLOR.....	10
SUBSTANCE	10
TEXTURE	5
POSE.....	5
STEM.....	<u>5</u>
	100

HISTORIC DAFFODILS

CONDITION.....	40
FORM.....	15
COLOR	15
SIZE	10
POSE	5
STEM	5
SUBSTANCE.....	5
TEXTURE.....	<u>5</u>
	100

Note: Judges may deduct up to five points for lack of uniformity in judging vases of three stems of daffodils of one cultivar &/or species.

GENERAL RULES

- A. Exhibits may be entered from 2:00- 9:00 pm on Thursday, April 18, 2019 and again from 7:00 am to 11:00 am on Friday, April 19, 2019. Lunch will be served at 11:00 am on Friday, and the show floor will be closed at that time except for the Classification Committee who will work between 11:00 am and 11:45 am to stage the show.
- B. Each exhibit must have a properly filled in Show Entry Card. Only the top half of the Entry Card needs to be filled in. Any information on a Show Entry Card which could compromise the anonymity of an exhibitor must be concealed during judging. Exhibitors are urged to read the Show Schedule carefully, including the Rules section, before preparing Show Entry Cards. Advance preparation of cards will enable you to place your entries quickly and correctly.
- C. The Classification Committee and Judges reserve the right to subdivide classes when there are more than three worthy exhibits in a class and if at least three worthy exhibits will be left in each subdivided class.
- D. The Show Committee will attempt to ensure that all exhibits are entered in appropriate classes before judging begins. However, each exhibitor is responsible for the accuracy of the entry card of his/her own show entries.
- E. Judging begins after lunch, around noon on Friday, April 19, 2019. Exhibits, awards and ribbons may not be removed prior to the closing of the show listed on the cover of the schedule.
- F. Exhibitors may not change, alter, re-label, substitute or remove an exhibit after judging has begun. If the Show Committee discovers an error before judging is completed, affected classes will be re-judged. If the error is discovered after judging is complete, any award will be forfeited. The decision of the Judges and Show Committee Chair is final.
- G. See our website: www.IndianaDaffodilSociety.org for tips and tricks on holding daffodils for show. Feel free to call this cell phone number the day of the show: Sue Luken 812-595-5823.

RULES FOR HORTICULTURAL EXHIBITORS

- 1. All classes in the Horticultural Division are open to anyone who grows daffodils, except as noted in the schedule, e.g., Classes G4 and M19 are only open to ADS members in good standing, and Section Z is only open to IDS members. See also Small Growers and Youth.
- 2. An exhibitor may make as many entries as desired in any class, provided each entry is a different cultivar or species or an entirely different collection of cultivars and/or species.
- 3. An exhibitor must have grown all blooms in the Horticultural Division in the open or in the open with temporary protection. Miniatures, species and container-grown daffodils may be grown in protected areas.
- 4. The RHS System of Classification will be used. Labeling authority for color code, year and originator is *Daffodils to Show and Grow*, 2016 edition, which is amended annually in the Dec. ADS Journal or Daffseek.org.
- 5. Color and Color Zone Definitions: **Color Code means both the RHS Division and color code, i.e., 2Y-Y.** The words “pink cup”, for example, describe daffodils where that color is solid, 2 W-P, or is present in two adjacent zones, 2 W-GPP or 2 W-PPY. The words “pink in cup” include daffodils with one or more cup zones of pink. The words “rimmed with pink” describe daffodils with pink only on the outer cup zone. “Colored” is any color other than white. **“Predominantly” means the same color in at least two adjacent zones.** A “reverse bicolor” has a color code indicating a predominantly colored perianth and a predominantly white cup. “Toned” refers to Dr. Throckmorton’s description of off-white, or very pale perianth color.

6. Only one First, one Second, and one Third Ribbon may be awarded in each class. Honorable Mention Ribbons may also be awarded if merited, but only if First, Second, and Third Ribbons have been awarded. First, Second, Third and Honorable Mention Ribbons may be withheld by the judges if, in their opinion, the exhibit is not worthy.
7. Each stem in an exhibit receiving an ADS Award must score at least 90 on the appropriate ADS Scale of Points. Furthermore, if a Blue ribbon (First) has been awarded in a class eligible for an ADS Award, the judges may not withhold the ADS Award.
8. Single-stem and three-stem entries for one cultivar or species must correctly list name and color code on the Show Entry Card. Exhibitors will use a single tube for three stem entries to make a vase of three. Entries that are not named, or are incorrectly named, will not be judged.
9. All collections of five stems or more must be exhibited with each cultivar or species in a separate staging tube. Each daffodil in a collection must be *legibly* labeled with name and color code. In addition, name of originator is required for Country Collections: Classes E22 through E25 and M17, and year of introduction is required for Classics (Section L) and Historics (Section H). Exhibitors must provide their own labels. The name (type) of collection, for example, "White Collection", "English Collection", or "Quinn", is required on the Show Entry Card.
10. Classic Daffodils are those standard daffodil cultivars originated between 1940-1969 inclusive. Blooms of Classic daffodils may be shown in all classes for named standard cultivars; however, only those shown in Classics (Section L) will be eligible for the ADS Classics Ribbons. Section L requires year of origination as well as cultivar name and color code on the Show Entry Card. The earliest date shown in *Daffodils to Show and Grow*, 2016 edition, which is amended annually in the Dec. ADS Journal or Daffseek.org. will be the authority.
11. Historic daffodils are daffodil cultivars originated before 1940. Blooms of historic daffodils may be shown in all classes for named cultivars; however, only those daffodils shown in Section H will be eligible for ADS Historic ribbons. Section H requires year of origination as well as cultivar name and color code on the Show Entry Card. The earliest date shown in *Daffodils to Show and Grow*, 2016 edition, which is amended annually in the Dec. ADS Journal or Daffseek.org. will be the authority. *Miniature daffodils registered prior to 1940, but delisted from the ADS Miniature List over time by the Miniature Committee, shall be eligible for entry in the Historic Section class(es) for Miniatures. They are eligible for all Historic Awards.*
12. Intermediate daffodils are standard daffodil cultivars in RHS Divisions 1, 2, 3, 4, or 11, having a single floret whose bloom size is typically above 50 mm up to 80 mm (2"-3 1/8") in diameter. Intermediate daffodils may be entered in classes for standard daffodils, as well as classes reserved for Intermediate daffodils. This means Intermediates entered in collection classes, or Sections S and Y (as well as Section I) are also eligible for the ADS Intermediate Ribbon. We encourage exhibitors to use a colored marker available from the Show Committee to draw attention to entries outside the Intermediate Section for consideration for this ribbon.
13. Miniature daffodils are daffodils named in the most recent ADS Approved List of Miniatures, (except as noted in Rule 11 and the Historic Section) with any official additions thereto, and are shown only in the classes for miniatures: Sections C, D & M and certain section classes as stated in the schedule. Any named or numbered diminutive daffodil that appears graceful, with all of its parts proportionately small, may also be entered in miniature classes, even if it is not on the official list, however, Judges may decline to judge an unofficial miniature if, in their opinion, it lacks grace or is too large to be considered a miniature.
14. Blooms of seedlings may be shown in all classes for named cultivars. Seedlings shown by the originator require seedling number, color code and parentage, if known, and are to be marked with a colored marker if they are to be considered by the judges for the Rose Ribbon. Seedlings shown by others require the originator's name, seedling number and color code and are not eligible for the Rose Ribbon.

RULES FOR PHOTOGRAPHY EXHIBITORS

1. The Indiana Daffodil Society is sponsoring a photography competition which celebrates daffodils, and photographs can be entered in any one of five classes.
 - Class P1 Daffodils in Nature or the Landscape
 - Class P2 Daffodils with People or Animals
 - Class P3 Portraits of Single Daffodils or Multiple Blooms of the Same Cultivar
 - Class P4 A Still Life with Static Inanimate Elements
 - Class P5 Daffodils from another Point of View or Abstract Images
 - Class P6 A Daffodil as a Perfect Horticultural Specimen
2. Exhibitors submitting entries in person should bring them to the Photography Registration Table at the show venue on Thursday April 18 from 3pm to 9pm or on Friday, April 19 from 7am to 11am. Entries may also be mailed to:

Jeanne Lager
2382 Greasy Creek Road
Nashville, Indiana 47448


Mailed entries must be received by Thursday April 18.
3. The photographer's name, address and phone number must be written on the back of each photograph at the top center. This will identify the top of the photograph.
4. A completed entry card must accompany each entry. The information on the card will include: name of photograph, the number of the class entered, the names of the daffodil(s) if known, and the photographer's name. Entry cards will be available at the show or can be obtained from the American Daffodil Society Website (Shows and Events. National Conventions. tabs).
5. The photography contest is open to all photographers. There is no entry fee.
6. All entries must be the work of the exhibitor. Any changes to the original image must be the work of the exhibitor and includes manipulation, cropping and enhancing for color/clarity. All entries must celebrate the daffodil with images of one or more daffodils as required by the class. All classes are open to color or black and white photographs.
7. Exhibitors may enter up to eight images, but no more than two photographs in each class. Images may not have won a blue ribbon in a previous American Daffodil Society Show.
8. Photographs are to be mounted on light weight stiff card stock, or foam core. Conventional matting may be used but is not required. Maximum exhibit size is 14 x 18 inches (including mat or mounting materials) and the minimum size is 5 x 7 inches. No glass or frames are allowed.
9. One 1st, one 2nd, and one 3rd place ribbon may be given in each class if merited. Honorable Mentions may be awarded in classes where the top three awards are given. Classes may be subdivided at the discretion of the photography chairman. Judges will consider creativity, composition, craft, and content when awarding ribbons.
10. The ADS Wells Knierim Ribbon will be presented to the Best Photograph in Show.
11. Entries and ribbons can be picked up at the end of the show on Saturday April 20 between 3pm and 5pm. Alternately the photographs can be returned by mail if a self-addressed postage paid envelope is supplied.
12. The Indiana Daffodil Society will exercise caution in safeguarding exhibits but cannot assume responsibility for lost or damaged photographs. It would be prudent to submit a copy or keep a digital copy of all photographs submitted. Entries which are not picked up will become the property of the Indiana Daffodil Society.
13. If you have any questions, email them to jmlager@aol.com or call 812-988-8431. I hope you will consider submitting photographs and attending the show.

SECTION A — One Single Stem of a Standard Daffodil (see Rules 3 & 8)

SECTION B — Three Stems of a Single Standard Cultivar or Species (see Rules 3 & 8)

SECTION C — One Single Stem of a Miniature Daffodil (See Rules 3 & 13)

SECTION D — Three Stems of a Single Miniature Cultivar or Species (Rules 3, 8 & 13)

	Section Letter & Class Number			
	A	B	C	D
DIVISION 1 - TRUMPET DAFFODILS				
Yellow perianth, predominantly yellow trumpet	A101	B101	C101	D101
Yellow perianth, predominantly orange or red trumpet	A102			
Yellow perianth, pink in trumpet	A103			
Reverse bicolor	A104	B102		
White perianth, white or GWW trumpet	A105	B103		
White perianth, yellow or orange in trumpet	A106	B104		
White perianth, pink in trumpet	A107			
Any other color combinations	A108			
DIVISION 2 - LARGE-CUPPED DAFFODILS				
Yellow perianth, yellow cup	A201	B201	C201	D201
Yellow perianth, orange or red cup	A202	B202		
Yellow perianth, orange or red rimmed cup	A203			
Yellow perianth, pink in cup	A204			
Reverse bicolor	A205	B203		
White perianth, predominantly yellow cup	A206	B204		
White perianth, yellow rimmed cup	A207			
White perianth, predominantly orange or red cup	A208	B205		
White perianth, orange or red rimmed cup	A209			
White perianth, predominantly pink cup	A210	B206		
White perianth, pink rimmed cup	A211			
White perianth, white or GWW cup	A212	B207		
Orange perianth, orange or red in cup	A213	B208		
Any other color combinations	A214			
DIVISION 3 -SMALL-CUPPED DAFFODILS				
Yellow perianth, yellow cup	A301	B301	C301	D301
Yellow perianth, orange or red cup	A302			
Yellow perianth, orange or red rimmed cup	A303			
Reverse bicolor	A304	B302		
White perianth, yellow, orange or red cup	A305	B303		
White perianth, yellow, orange or red rimmed cup	A306			
White perianth, pink in cup	A307			
White perianth, white or GWW cup	A308			
Orange perianth, orange or red in cup	A309			
Any other color combinations	A310	B304		
DIVISION 4 - DOUBLE DAFFODILS				
One Bloom to a Stem:			C401	D401
Yellow perianth, petaloids predominantly yellow	A401	B401		
Yellow perianth, petaloids predominantly orange/red/pink	A402	B402		
Reverse bicolor	A403			
White perianth, petaloids predominantly yellow	A404	B403		
White perianth, petaloids predominantly orange/red/pink	A405			
White perianth, petaloids predominantly white	A406			
Any other color combinations	A407			
More Than One Bloom to a Stem:				
Colored perianth	A408	B404		
White perianth	A409			

A - One Single Stem of a Standard Daffodil B - Three Stems of a Single Standard Cultivar or Species C - One Single Stem of a Miniature Daffodil D - Three Stems of a Single Miniature Cultivar or Species	Section Letter & Class Number			
	A	B	C	D
DIVISION 5 - TRIANDRUS DAFFODILS				
Yellow perianth, yellow cup	A501	B501	C501	D501
Yellow perianth, orange/red/pink in cup	A502	B502		
Reverse bicolor	A503			
White perianth, yellow/orange/red in cup	A504	B503		
White perianth, pink in cup	A505			
White perianth, white or GWW cup	A506	B504		
Any other color combinations	A507			
DIVISION 6 - CYCLAMINEUS DAFFODILS				
Yellow perianth, yellow cup	A601	B601	C601	D601
Yellow perianth, orange/red in cup	A602	B602		
Yellow perianth, pink in cup	A603			
Reverse bicolor	A604			
White perianth, yellow in cup	A605	B603		
White perianth, orange/red in cup	A606			
White perianth, pink in cup	A607			
White perianth, white or GWW cup	A608	B604		
Any other color combinations	A609			
DIV. 7 - JONQUILLA & APODANTHUS DAFFODILS				
Yellow perianth, yellow cup	A701	B701	C701	D701
Yellow perianth, orange/red in cup	A702	B702		
Yellow perianth, pink in cup	A703			
Reverse bicolor	A704	B703		
White perianth, yellow/orange/red in cup	A705	B704		
White perianth, pink in cup	A706			
White perianth, white or GWW cup	A707			
Any other color combinations	A708			
DIVISION 8 - TAZETTA DAFFODILS				
Yellow perianth, yellow cup	A801	B801	C801	D801
Yellow perianth, orange/red/pink in cup	A802			
White perianth, yellow in cup	A803	B802		
White perianth, orange/red/pink in cup	A804	B803		
White perianth, white or GWW cup	A805			
Any other color combinations	A806			
DIVISION 9 - POETICUS DAFFODILS				
White perianth, eye green	A901	B901	C901	D901
White perianth, eye any other color	A902			
DIVISION 10 - BULBOCODIUM DAFFODILS				
Any color	A1001	B1001	C1001	D1001
DIVISION 11 – SPLIT-CORONA DAFFODILS				
11a Colored perianth, colored corona	A1101	B1101	C1101	D1101
11a White perianth, yellow in corona	A1102	B1102		
11a White perianth, orange/red/pink in corona	A1103			
11a White perianth, white or GWW corona	A1104			
11a Any other color combinations	A1105			
11b Any cultivar	A1106			
DIVISION 12 – MISCELLANEOUS DAFFODILS				
Any color	A1201	B1201	C1201	D1201
DIVISION 13 – SPECIES DAFFODILS DISTINGUISHED SOLELY BY BOTANICAL NAME				
Any color	A1301	B1301	C1301	D1301

SECTION E: COLLECTIONS OF FIVE STANDARD DAFFODILS - five different cultivars, one stem each, each individually labeled with cultivar name and color code. *(See Rules 5 & 9)*

DIVISIONAL COLLECTIONS - five different cultivars, one stem each, any colors

TRUMPETS	Five different cultivars from Division 1	Class E01
LARGE CUPS	Five different cultivars from Division 2	Class E02
SMALL CUPS	Five different cultivars from Division 3	Class E03
DOUBLES	Five different cultivars from Division 4	Class E04
TRIANDRUS	Five different cultivars from Division 5	Class E05
CYCLAMINEUS	Five different cultivars from Division 6	Class E06
JONQUILLAS	Five different cultivars from Division 7	Class E07
TAZETTAS	Five different cultivars from Division 8	Class E08
POETS	Five different cultivars from Division 9	Class E09
BULBOCODIUMS	Five different cultivars from Division 10	Class E10
SPLIT-CORONAS	Five different cultivars from Division 11	Class E11
OTHER	Five different cultivars from Division 12	Class E12
SPECIES AND INTER-SECTIONAL HYBRIDS	Five different daffodils distinguished solely by botanical name	Class E13

COLOR COLLECTIONS - five different cultivars, one stem each, any division, in the following colors

TRADITIONAL	Yellow perianth, yellow cup daffodils	Class E14
PALE-COLORINGS	White, “toned”, or lemon colored perianth, and a corona of lemon, amber, or lavender	Class E15
ANGELIC	White daffodils, a green eye is acceptable.	Class E16
LIL’ DEVIL	Yellow or orange perianths with predominantly orange or red in cup	Class E17
IT’S A GIRL!	Daffodils with predominantly pink in cup	Class E18
IN REVERSE	<i>ADS Maroon Ribbon.</i> Reverse bicolor daffodils <i>(See Rule 5)</i>	Class E19
SUNNYSIDE UP	Bicolor daffodils: white perianth, yellow cup	Class E20
RING AROUND THE ROSIE	White perianth, cup rimmed with yellow or pink	Class E21

COUNTRY OF ORIGIN COLLECTIONS - five different cultivars, one stem each, any division. The entry must also include the name of the originator.

AMERICAN	<i>ADS Red-White-and-Blue Ribbon.</i> Cultivars bred in the USA.	Class E22
ENGLISH	Cultivars bred in England	Class E23
IRISH	Cultivars bred in Northern Ireland or Ireland	Class E24
DOWN UNDER	Cultivars bred in Australia &/or New Zealand	Class E25

SECTION G: GRAND COLLECTIONS OF STANDARD DAFFODILS (<i>Rules 1, 6 & 9</i>)	
BOZIE — Twelve different cultivars or species, one stem each, from at least four RHS Divisions. (<i>Eligible for the ADS Bozievich Ribbon</i>)	Class G1
HAVENS — Twelve different cultivars from RHS Divisions 5 through 10, one stem each, from at least three RHS Divisions (<i>Eligible for the ADS Havens Ribbon</i>)	Class G2
THROCKMORTON —Fifteen cultivars, one stem each, from fifteen different RHS color code classifications (<i>Eligible for the ADS Throckmorton Ribbon</i>)	Class G3
QUINN — Twenty-four different cultivars or species, one stem each, from at least five RHS Divisions. Exhibitor must be member in good standing of ADS to enter the class. (<i>Eligible for the ADS Carey E. Quinn Medal/Ribbon</i>)	Class G4
HARRY I. TUGGLE, JR. AWARD — Three stems each of twelve different cultivars and/or species from at least three divisions. First time winners may receive the Bronze Tuggle medal. Former winners receive the Tuggle ribbon. <i>This class is open only to ADS members. Offered only at regional shows.</i>	Class G5

SECTION H: HISTORIC DAFFODILS – Pre-1940 (*See Rules 4, 9, & 11*) This section is open to all cultivars, i.e. not species, introduced or in gardens before 1940. All cultivars shall be labeled with name, division number, and year of registration (or introduction). Miniature daffodils, introduced or in gardens before 1940, but removed from the ADS Approved Miniature List, shall be eligible for entry in the Historic Section class for Miniatures--and only in the Historic Section. A list of these “de-listed” cultivars is listed on our website <http://www.indianadaffodilsociety.org/HistMinis.pdf> and all are eligible for all Historic Awards. Winners of the Historic single stem, 3-stem, and collection of 5 are eligible for consideration for the Gold, Mini-Gold, White, Mini-White, and Purple Ribbons, in which case they are to be judged on the Cultivar scale.

	One stem, one standard cultivar	Three stems, one standard cultivar	Collection of five different standard cultivars, one stem each, <i>Historic Collection of Five Ribbon</i>
Pre-1900	Class H1	Class H4	Class H5 <i>The Joe Hamm Award Rosette</i>
1900-1919	Class H2		
1920-1939	Class H3		
See Rule 11 for miniature eligibility.	One Stem, one miniature cultivar	Three stems, one miniature cultivar	Collection of five different miniature cultivars, one stem each, <i>Historic Collection of Five Ribbon</i>
Any pre-1940	Class H6	Class H7	Class H8

SECTION I: INTERMEDIATE DAFFODILS - (*See Rules 4, 9, & 12*) Intermediate sized single-floreted standard daffodil cultivars from RHS Divisions 1, 2, 3, 4, or 11. Bloom size is typically above 50 mm up to 80 mm (2”-3 1/8”) in diameter. No species. Rule 12 addresses sections where these flowers may be exhibited to win the Best Intermediate Single Stem Ribbon.

Division	One stem, one standard cultivar	Three stems, one standard cultivar	Collection of five different cultivars, one stem each (<i>Rule 9</i>)
1 Trumpets	Class I 1	Class I 6	Class I 7
2 Large Cups	Class I 2		
3 Small Cups	Class I 3		
4 Doubles	Class I 4		
11 Split Cups	Class I 5		

SECTION L: CLASSIC DAFFODILS - (See Rules 4, 9 & 10) Species are excluded.			
	One stem, one standard cultivar	Three stems, one standard cultivar	Collection of five different cultivars, one stem each (Rule 9)
1940-1949	Class L1	Class L4 <i>ADS Classic Vase of Three Ribbon</i>	Class L5 <i>ADS Classic Daffodil Collection</i>
1950-1959	Class L2		
1960-1969	Class L3		

SECTION M: ADS MINIATURE DAFFODIL COLLECTIONS - (See Rules 2, 3, 8, 9, and 13)	
Any five different stems, cultivars or species (Eligible for the ADS Lavender Ribbon)	Class M1
Five different stems, each from the same RHS Division (Eligible for the ADS Lavender Ribbon)	Class M2
Five different stems, from five different RHS Divisions (Eligible for the ADS Lavender Ribbon)	Class M3
ADS MINIATURE RED-WHITE-AND-BLUE RIBBON Five different cultivars bred in USA, one stem each. (Eligible for the ADS Lavender Ribbon)	Class M4
DELIA BANKHEAD RIBBON Nine different cultivars or species, one stem each from at least three RHS Divisions (Eligible for the ADS Delia Bankhead Ribbon)	Class M5
ROBERTA C. WATROUS RIBBON Twelve different cultivars or species, one stem each, from at least three RHS Divisions. Exhibitor must be member in good standing of ADS to enter the class. (Eligible for the ADS Roberta C. Watrous Medal/Ribbon; * see Rule 1)	Class M6
HAROLD KOPOWITZ PREMIER MINIATURE COLLECTION RIBBON Twenty-four different miniature cultivars, seedlings, and/or species from at least five RHS divisions	Class M7
MINIATURE BRONZE RIBBON – Five miniature cultivars and/or species, three stems of each, from at least three RHS divisions. Offered only at regional shows.	Class M8
Collections of Miniatures Exhibited by their Hybridizer Exhibitors must be ADS members. All flowers must be considered appropriate for the ADS Approved List of Miniature Daffodils for an award to be given. Identification of all blooms, both named and numbered, must be concealed until after judging. To facilitate the selection of candidates for the Miniature Rose Ribbon, seedlings are to be marked by a check on the card facing the judges. Flowers may be from any division.	
Three different miniature cultivars exhibited by their hybridizer and originator.	Class M21
Six different miniature cultivars exhibited by their hybridizer and originator.	Class M22
Twelve different miniature cultivars exhibited by their hybridizer and originator.	Class M23

SECTION S: SMALL GROWERS SECTION - Open to anyone growing fewer than 50 different cultivars and/or species. Rule C is extended to permit subdividing by color or division.			
	One standard stem	One miniature stem	Three stems, one standard or one miniature cultivar, or one species
RHS Divisions 1-4	Class S1	Class S4	Class S3
RHS Divisions 5-13	Class S2	Class S5	

SECTION Y: YOUTH DIVISION - For exhibitors 20 years old or younger. Youth exhibitors are not restricted to this section; they may elect to enter other sections for which their exhibits qualify. Rule C is extended to permit subdividing by color or division.

	One stem	Three stems, one cultivar	Collection of five different varieties
Standard cultivar or species	Class Y1	Class Y3	Class Y4
Brooke Ager Youth Challenge Ribbon 2019 'Bravoure'	Class Y1a		
Miniature cultivar or species (<i>See Rule 8</i>)	Class Y2		

SECTION Z: INDIANA DAFFODIL SOCIETY CLASSES --OPEN ONLY TO IDS MEMBERS (*See Rules 1, 8 & 9*)

THE HELEN K. LINK AWARD — For a collection, three stems each of five different cultivars from RHS Divisions 5-9. <i>The Helen Link Award Rosette</i>	Class Z1
THE HELEN TRUEBLOOD AWARD — Three stems each of three different Intermediates. (<i>See Rule 8</i>) <i>The Helen Trueblood Award Rosette</i>	Class Z2
IDS CLUB CHALLENGE AWARD 2019 — One stem of Exotic Mystery 11a Y-YGY, or previous: Picture Perfect 2Y-R, or Reed 84-38-1 1W-Y. <i>Sponsored by Joan Workman, \$25.00 gift certificate from Oakwood Daffodils in Niles, Michigan</i>	Class Z3
PARENT & CHILD — Exhibit of a daffodil with its parent or grandparent. <i>Sponsored by IDS. Prize is a \$25.00 gift certificate from Oakwood Daffodil in Niles, Michigan</i>	Class Z5
NO YELLOW HERE — Best <i>cyclamineus</i> hybrid (Div 6) entered in this section without yellow in its color code. <i>Sponsored by Sara Kinne. \$25.00 gift certificate from Oakwood Daffodils in Niles, Michigan</i>	Class Z6
SCENTED BREEZE — A collection of three different daffodils, each in a separate tube, all from the scented RHS Divisions: Div 7 <i>jonquillas</i> and Div 8 <i>tazettas</i> . <i>Sponsored by Ruth Pelouch. \$25.00 gift certificate from Oakwood Daffodils in Niles, Michigan</i>	Class Z7



Join Us! Dues to the Indiana Daffodil Society are only \$10 per year. Find out more on our web page: IndianaDaffodilSociety.org



Join the American Daffodil Society! More information is available at our web page: daffodilusa.org

MIDWEST DIVISION OF ADS SPECIAL (EXPERIMENTAL) AWARD

Chartreuse Ribbon: Most pleasing fragrance on a qualifying daffodil.



AMERICAN DAFFODIL SOCIETY AWARDS

Horticulture:

Gold Ribbon: Best standard daffodil

White Ribbon: Best vase of three stems of standard daffodils.

Rose Ribbon: Best standard seedling exhibited by its originator.

Purple Ribbon: Best collection of five different standard daffodils from any Section.

Red-White-and-Blue Ribbon: Best collection of five different standard cultivars, one stem each, of American breeding (Class E22).

Maroon Ribbon: Best collection of five different standard cultivars, one stem each, reverse bicolor, from any division or divisions (Class E19).

Marie Bozievich Ribbon (Green Ribbon): Best collection of twelve different cultivars and/or species of standard daffodils from at least four RHS divisions (Class G1).

Elise Havens Ribbon: Best collection of 12 standard cultivars from no fewer than three divisions of RHS Divisions 5 through 10 (Class G2).

Thomas D. Throckmorton Ribbon: Best collection of fifteen cultivars and/or species of standard daffodils from fifteen different RHS classifications (Class G3).

Cary E. Quinn Award: Silver Medal or Ribbon for the best collection of twenty-four different cultivars and/or species of daffodils from at least five RHS Divisions. The medal may be won only once by any exhibitor in all ADS shows where offered. A former winner may exhibit in this class but may receive only the Quinn Ribbon. Open only to ADS members. (Class G4).

Harry I. Tuggle, Jr. Award — Bronze Tuggle medal or Ribbon for the best collection of three stems each of twelve different cultivars and/or species from at least three divisions.. Open only to ADS members at regional shows (Class G5).

Intermediate Ribbons: Best intermediate-size cultivar. (see Rule 12) Also the Best Vase of Three Intermediates and Best Collection of Five Intermediates Ribbons. The Best 3-Stem may be from Intermediate section or in standard collection classes of vases of three and Best Intermediate Collection is **only** from the Intermediate section.

Miniature Gold Ribbon: Best miniature or species miniature daffodil

Miniature White Ribbon: Best vase of three stems of miniature or species miniature daffodils.

Miniature Rose Ribbon: Best miniature seedling exhibited by its originator.

Lavender Ribbon: Best collection of five miniature daffodils.

Miniature Red-White-and-Blue Ribbon: Best collection of five different miniature cultivars, one stem each of American breeding (Class M4).

Delia Bankhead Ribbon: Best collection of nine miniature cultivars and/or species, one stem each from at least three different RHS divisions (Class M5).

Roberta C. Watrous Award: Silver Medal or Ribbon for the best collection of twelve different cultivars and/or species of miniature daffodils from at least three RHS Divisions. This medal may be won only once by any exhibitor in all ADS shows where offered. A former winner may exhibit in this class but may receive only the Watrous Ribbon. Open only to ADS members (Class M6).

Harold Koopowitz Premier Miniature Collection Ribbon Best collection of twenty-four different miniature cultivars, seedlings, and/or species from at least five RHS divisions (Class M7).

Miniature Bronze Ribbon – Best collection of five miniature cultivars and/or species, three stems of each, from at least three RHS divisions. Offered only at regional shows (Class M8).

Classics Ribbons: Best in Section, Best exhibited in Single Stems, Best Vase of Three, Best Collection of Five – all registered between 1940-1969 (all from Section L).

Historic Daffodil Ribbons: Standard or Miniature registered prior to 1940. Best in Section, Best Vase of Three, Best Collection of Five (all from Section H).

Youth Ribbons: Standard or Miniature exhibited by a person twenty years of age or younger. (Class Y1 or Y2), Best in Section, Best Vase of Three (Y3), Best Collection of Five (Class Y4).

Brooke Ager Youth Challenge Ribbon: Best single stem of annual cultivar selected by ADS Youth Committee (Class Y1a).

Small Growers Ribbon: Best standard daffodil exhibited in Section S by a Small Grower growing fewer than 50 different daffodil varieties.

Silver Ribbon: Awarded to the exhibitor winning the most first place ribbons in the Horticultural Division.

Photography:

Wells Knierim Ribbon: Best photograph in the show.

